

This article is published by the Tasmanian Philatelic Society for research and study purposes. The copyright remains with the author.

For more information on Tasmanian Philately or to join the Society, go to <http://www.tps.org.au>

## 'PAID ALL' MAIL UNITED STATES TO TASMANIA 1886 - 1891

John Shepherd \*

The use of 'Paid All' markings on mail between the Australian Colonies and the United States has attracted considerable attention in the pages of *The Informer*. A listing of covers from Queensland to the US with 'Paid All' marks has been published in Australia.<sup>1</sup> Covers between the Colony of Tasmania and the United States are discussed in this article.

On 31 May 1886 the governments of the United States and Tasmania signed the *Postal Convention Between the United States and the Colonial Government of Tasmania*. The convention established, inter alia, a single letter rate of 12c per ½ ounce or 6d per ½ ounce between the two countries with 12c/6d payable for each additional ½ ounce (article 3).<sup>2</sup> Importantly no further postage was levied on a fully paid letter by a recipient country, thus from 1886 letters could be prepaid 'all the way'. The convention was effective from 1 July 1886 (article 10).

Article 8 of the treaty provided that letters be marked to indicate that postage had been pre-paid:

'Every full pre-paid letter dispatched from one country to the other shall be plainly stamped with the words 'paid all', in *red ink*, on the right-hand upper corner of the address, in addition to the date-stamp of the office at which it was posted; and on insufficiently paid letters the amount of deficient postage shall be inscribed in *black ink*'.

### **Pre-Convention Mail**

It is useful to compare the treatment of mail between the countries shortly prior to entry into the convention. Prior to the 1886 treaty mail from Tasmania to the United States was taxed on arrival. The 'blanket' incoming steamship rate was 5c postage due from 1 July 1875.<sup>3</sup>

Illustrated is an 1878 (September 5) cover from Hobart Town to Ohio. The route was from Sydney to San Francisco (backstamped 10 October 1878) on the Pacific Mail Steamship Co. of New York ship *City of New York*. The rate from Tasmania was 6d per ½ ounce. The entire was taxed 5c on arrival at San Francisco for a single incoming steamship letter. The 5 cents postage due from the addressee was for the internal US rate (comprising 2c ship letter + 3c inland postage). The new route from Sydney to San Francisco for Tasmanian mails was first advertised by GPO Notice dated 16 March 1874, published in the *Hobart Town Gazette* on 24 and 31 March 1874. The Tasmanian notice advertising the 6d rate to the United States has not been located but it is assumed that Tasmania adopted the existing NSW rate of 6d<sup>4</sup> at some time after the 1873 Intercolonial Postal Conference when NSW and New Zealand contracted for a new service to England via

San Francisco.<sup>5</sup> The British Government agreed in 1873 to subsidise the carriage of mail to and from Galle, San Francisco and Singapore. The Colonies had to provide their own transportation to these points. Tasmania, not surprisingly, joined with Victoria in subsidising a P&O service to Galle. NSW opted for a Trans-Pacific route to San Francisco. Tasmania was not a party to the Pacific contract but could participate in the NSW contract by paying an agreed amount to NSW. A 6d rate to England via San Francisco by the *Orient Line* was advertised to the Tasmanian public by a General Post Office notice dated 13 February 1880<sup>6</sup> although 6d rate mail via San Francisco has been seen from the late-1870s.



1878 cover Hobart Town to Cincinnati, Ohio taxed 5c on arrival in the United States

Prior to the treaty mail from the United States to Tasmania was not taxed on arrival due to the postal reforms of 1 November 1853.<sup>7</sup>

## **1886 Entry into the Postal Convention**

### *United States to Tasmania*

Two covers are known to the author from the United States to Tasmania during the period the treaty was in force. The first cover was sent from New York in 1889 bears a 10c brown and 2c green paying the single ship letter rate. The red straight-line serified 'Paid All' mark was applied at New York when the cover was posted on October 10 1889. The cover was in likelihood sent by steamer *Alameda* from San Francisco to Sydney departing sometime after 14 October 1889 when the mails from England arrived in New York by the *Aurania*.<sup>8</sup> The cover is backstamped at San Francisco (16 Oct), Launceston (18 Nov) and Deloraine (18 Nov). The mails for Tasmania would have been sent by rail to Melbourne and then by Bass Strait steamer to Launceston. The cover is addressed to a Mrs Lane at the *Plough Inn*, one of the oldest buildings in Deloraine, an agricultural district 45 miles by rail outside of Launceston.<sup>9</sup> This cover represents a correct use of a 'Paid All' mark pursuant to the treaty with Tasmania.



1889 'Paid All' cover New York to Deloraine, Tasmania – single 12c treaty rate  
Correct use of the 'Paid All' marking

The second cover was sent from New Jersey via San Francisco in 1890. The cover again bears the serifed 'Paid All' mark applied in New York. I have not sighted the backstamps to determine the exact sailing.



1890 'Paid All' cover New Jersey to Hobart, Tasmania – 12c treaty rate and endorsed 'Via San Francisco'

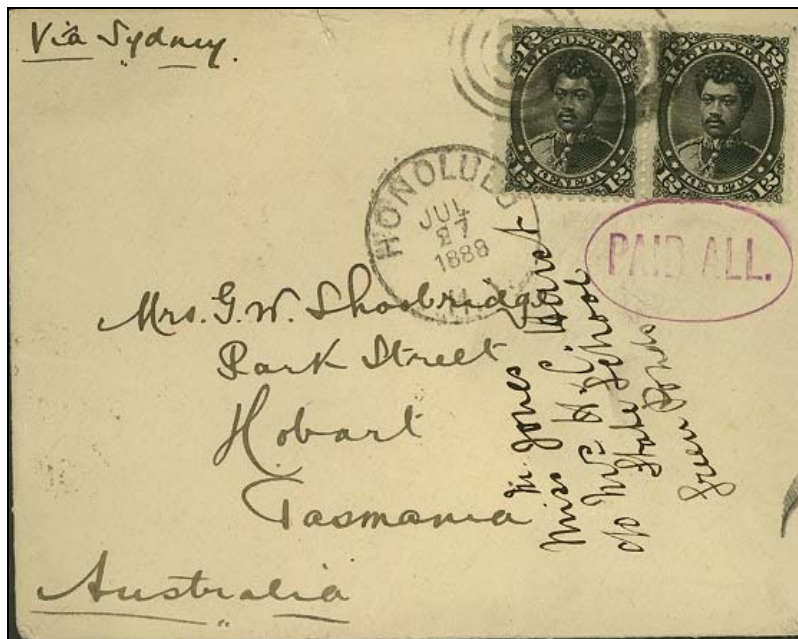
#### *Mails from Hawaii*

An 1888 cover from Hawaii to Tasmania is recorded with an oval 'Paid All' marking applied at Honolulu which requires some discussion. The cover is dated 1888 (July 27) from Hawaii to Tasmania franked with a pair of 1875 12c black (Scot#36) tied by target cancels paying the double rate. The cover has a 'Paid All' oval handstamp in purple applied at Honolulu and was sent by steamer to Sydney, Australia. The *Zealandia* departed San Francisco by 29 July for Honolulu where this cover boarded, arriving Auckland (17 August) and then Sydney by 24 August 1888.<sup>10</sup> The cover has Launceston and Hobart transit backstamps and was re-addressed locally to Green Ponds after arrival at

Hobart.<sup>11</sup> The Honolulu handstamp is distinctive, with sans serif letters and a period after 'ALL', and is designated Type 'H4' by Hugh Wynn.<sup>12</sup>

The Hawaii cover is not a true example of mail sent pursuant to the convention. Hawaii was not of course a state of the United States at the time. Hawaii was admitted into the UPU on 1 January 1882 whilst Tasmania was not a member until 1891. It is interesting to note further that Hawaii was not a party to the 1886 US-Tasmania convention. The postage rate paid is a double-weight foreign letter (12c per ½ ounce x2) from Hawaii to Australia, New Zealand, Fiji, and Samoa (via New Zealand) in effect between 1882-1893. The rate paid is the double Hawaiian foreign letter rate which happens to coincide with the double letter rate from the US to Tasmania. It should not have been necessary to mark Hawaiian mail to Tasmania with a 'Paid All' marking.

The Kingdom of Hawaii entered into Postal Conventions with the United States (1 July 1870), New Zealand (1 Dec 1871) and the Colonial Government of New South Wales (1 July 1874).<sup>13</sup> The involvement of these countries was critical to ship Hawaiian mails across the Pacific and the timing of the NSW treaty coincides with the Pacific Mail Steamship contract between Sydney and San Francisco via Hawaii. The NSW-Hawaii treaty explains the use of the Paid All marking on mails to New South Wales. Hawaii did not enter into similar treaties with the other Australian Colonies and there was no treaty with Tasmania. It is probable that the Hawaiian post office treated the Australian mails in a uniform way, marking all outgoing letters after 1874 with a 'Paid All' mark regardless of the destination as Sydney was the shipping terminus. As such, the 'Paid All' marking on this cover is considered to be struck in error. Covers from Hawaii to Victoria (1881<sup>14</sup> and 1891<sup>15</sup>) and South Australia (1883<sup>16</sup> and 1888<sup>17</sup>) are known with struck with Hawaiian Paid All markings where no treaty existed support this theory.



1888 'Paid All' cover Honolulu, Hawaii to Green Ponds, Tasmania – 24c double rate from Hawaii.  
The 'Paid All' marking was struck in error as no treaty existed between Hawaii and Tasmania

#### *Tasmania to the United States*

After the treaty came into effect the 6d rate from Tasmania continued but without additional postage imposed by the United States. It is evident from an examination of covers sent from Tasmania to the US between 1886 and 1891 that Tasmania, unlike the other Australian Colonies such as NSW, *failed* to comply with the treaty in that it *did not* use a 'Paid All' marking on mail to the United States despite the

explicit wording of the convention. As such, exhibitors should seek covers originating in the United States to show the treaty between the two countries.

The convention was effectively superseded by the entry of Tasmania into the Universal Postal Union (UPU). Tasmania was admitted as member of the U.P.U on 1 October 1891.<sup>18</sup> The United States was an existing member and consequently it was not necessary to mark 'Paid All' on mail to Tasmania from that date. The standard U.P.U. rates from Tasmania did not take effect until 8 October 1891.<sup>19</sup> From this date the letter rate to the United States was reduced to 2½d per ½ ounce.

*\*John Shepherd is the editor of 'The Courier,' the research journal of the Tasmanian Philatelic Society. Contact: [johnshepherdlawyer@hotmail.com](mailto:johnshepherdlawyer@hotmail.com), or P.O. Box 2104, Lower Sandy Bay, Tasmania 7005, Australia.*

---

<sup>1</sup> Beston, B. 'Paid All – To and Via the United States of America', *PFA*. Dec 2002. pp.99-104.

<sup>2</sup> The USA-Tasmania convention was published by Hugh Wynn in *The Informer*. Winter 1996-1997, pp.21-23 and *The Courier* #23, pp.14-17.

<sup>3</sup> Wierenga, T.J. *United States Incoming Steamship Mail 1847-1875*. 2<sup>nd</sup> edn. p.224.

<sup>4</sup> The NSW rate to the United States via San Francisco was 6d from 5.8.1870: White, J. *The Postal History of New South Wales 1788-1901*. p.355.

<sup>5</sup> Orchard, A. *Tasmanian Postal Acts and Regulations*. Vol.4. pp.104-109. This series hereinafter referred to as 'Orchard'.

<sup>6</sup> Orchard. Vol. 5. p.37.

<sup>7</sup> Under the Regulations made pursuant to the *Post Office Act* 1853, Regulation 45(5) provided all ship letters inwards are delivered free of postage. Orchard. Vol.2. p.44.

<sup>8</sup> Tabcart, C. *Sydney Views*. #96.p.4. Tabcart's chart is lacking the data for the October 1889 sailing departing San Francisco.

<sup>9</sup> Hoare L. *Tasmanian Towns in Federation Times*. 1998, p.74.

<sup>10</sup> Tabcart, C. 'The San Francisco Route 1886-1890', *Sydney Views* #95. p.14

<sup>11</sup> This cover was first discussed by the author in an article in *The Courier*. #40 December 2005, p.5; *Prestige Philately* auction#117 Lot 803.

<sup>12</sup> Wynn, H. 'Hawaiian "Paid All" Types Recorded', *The Informer*. Spring 2001. p.40.

<sup>13</sup> For a copy of the Hawaii-NSW treaty see: Fraser, J. 'Paid All and the Hawaiian Islands', *Sydney Views*. #30. pp.8-9.

<sup>14</sup> *Prestige Philately*#85 Lot 1328

<sup>15</sup> A cover dated 1891 (April 10) from Hawaii to Melbourne, Victoria at the 12c single rate is known with the oval Honolulu 'Paid All.' marking in magenta.

<sup>16</sup> Premier Philatelic Auctions#85 Lot 1329; Wynn. *The Informer*. Spring 2001. p.40.

<sup>17</sup> Premier Philatelic Auctions#85 Lot 1330

<sup>18</sup> Tinsley states that Tasmania became a 'qualified member' of the UPU on 1 August 1891: p.101.

<sup>19</sup> Government Notice No.345. *Hobart Town Gazette*. 8 October 1891. Orchard. Vol.6. p.132.