

FLAW FINDER 1D TYPO PLATE 1 & 2



Contents

INTRODUCTION.....	6
THE FLAW FINDER.....	6
OTHER VARIETIES.....	7
INTRODUCTION TO THE TASMANIAN PICTORIAL 1d PRINTINGS.....	8
The Recess Prints.....	8
The Lithographed printings.....	8
The Typograph printings.....	8
Lithograph v Typograph difference:.....	9
NEW PLATINGS.....	9
Flaw finder.....	10
Top frame.....	10
Left frame.....	13
Bottom frame.....	15
Right frame.....	16
Top Left corner.....	18
Top right corner.....	18
Left ferns.....	19
Tasmania band.....	20
Right ferns.....	21
Sky.....	22
Trees.....	25
Water and banks.....	28
LVT.....	29
Mount Wellington band.....	30
RVT.....	32
Plated positions, plate 1.....	33
1 - 2.....	34
1 - 3.....	34
1 - 4.....	35
1 - 5.....	35
1 - 6.....	36
1 - 7.....	36
1 - 9.....	37

1 - 10	37
1 - 11	37
1 - 19	38
1 - 20	38
1 - 24	38
1 - 25	39
1 - 26	39
1 - 27	40
1 - 30	40
1 - 31	41
1 - 32	41
1 - 33	41
1-36	42
1 - 40	42
1 - 41	42
1 - 42	43
1 - 43	43
1-48	43
1 - 49	44
1 - 50	44
1 - 53	45
1 - 56	46
1 - 60	46
OTHER POSITIONS.....	46
Plated positions, plate 2.....	47
2 - 1	47
2 - 2.....	48
2 - 3	49
2 - 4	49
2 - 5	50
2-6.....	50
2 - 7	51
2 - 8	52
2 - 9	52

2 - 10	53
2 - 12	54
2 - 16	54
2 - 19	55
2 - 20	55
2 - 24	56
2 - 25	56
2 - 26	56
2 - 29	57
2 - 31	57
2 - 32	57
2 - 35	58
2 - 36	58
2 - 37	58
2 - 38	59
2 - 40	59
2 - 41	59
2 - 44	60
2 - 45	60
2 - 48	61
2 - 51	61
2 - 52	62
2 - 53	62
2 - 54	63
2 - 56	63
2 - 57	64
2 - 58	64
2 - 59	64
2 - 60	65
UCV's Plates 1 & 2	66
UCV ii:.....	66
UCV v:.....	66
UCV x:.....	66
UCV xi.....	67

INTRODUCTION

This is the second edition of the plate 1 & 2 flaw location guide.

Since publishing the first edition I have received a considerable amount of extra material, some kindly loaned by Garry Reynolds of Yass, NSW, a retired stamp dealer. I have also obtained a full early sheet of plate 2 and a quantity of single and paired stamps.

These, together with the scans previously supplied by Jerry Weirich and Malcolm Groom have helped identify a number of new platings and new states of previously recorded platings.

There have been some corrections to the earlier work done by Keith Lancaster whose book provides a valuable source of information on all the Pictorial values.

There are still a small number of Unlocated Constant Varieties (UCV's) which are unplaced, also a number of flaws of which I have only seen one or two copies. The later prints show considerable colour flaws in the sky on a number of positions, more work needs to be done to try to plate these.

I have attempted to provide time lines for varying states where applicable, these are based on cancellation dates, watermark position (vertical or horizontal) and colour. Where dates are given they are based on the earliest or latest seen on the cancellation.

Anyone who has additional information or material that may assist is welcome to contact me via e mail, 'rsingle@enchem.co.nz', and scans will be gratefully received.

Richard Singleton August 2018.

THE FLAW FINDER

For the flaw finder the stamp is broken down the following headings:

- Top frame
- Left frame
- Bottom frame
- Right frame
- Top left corner
- Top right corner
- Left ferns
- Tasmania band
- Right ferns
- Sky
- Trees
- Water and banks
- Left Value Tablet (LVT)
- Mount Wellington band
- Right Value Tablet (RVT)

Where a flaw covers more than one area it will be shown in both.

Under the picture of the flaw the plate position is noted. Check the relevant position in section 2 for any other flaws that may be present and the description.

OTHER VARIETIES

Watermarks

Printings from the first in 1902 to January 1903 had the V over Crown (Victoria watermark paper) horizontally in either direction.

From January 1903 onwards the same watermark was vertical or inverted in equal numbers.

In a mid 1903 printing a small number of stamps were produced reversed (on the wrong side of the paper).

Colours

The initial printings were done in pale red. There was a small printing using the pale red with a vertical watermark.

A change to a deeper rose red was made soon after the change in watermark orientation. There are varying shades of the rose red.

Perforations

Perforating was performed primarily in Melbourne using the two Victorian perforators either 11 or 12½. Sometimes it was noticed on checking before shipping that a line of perforation was either missing or too close to the printed stamp. The sheets would then be reperfected on occasion using the different perforator.

Hence we find stamps with double perforations and with both 11 and 12½ perforations.

Rarely the missing perforation was discovered on arrival in Hobart and the Tasmanian perforator gauge 12 (10.8) was used.

For the early horizontal watermark printing perforation 12½ was more common than the 11.

INTRODUCTION TO THE TASMANIAN PICTORIAL 1d PRINTINGS.

The printings of the 1d Pictorial can be broken down into three recognisable groups.

- The Recess prints done in London England,
- The lithographed prints done in Melbourne, Victoria and
- The typographed prints done in Melbourne, Victoria.

The Recess Prints.

The first set of printing was done by De La Rue in London based on photographs taken in Tasmania.

These stamps can be identified by the use of the 'TAS' watermark and are perforated 14, they were first issued in December 1899.

There a number of hairline flaws on the 1d value but I am not aware of any recent work to plate them, there are some notes on flaws in the K Lancaster book.



The Lithographed printings.

Control of all the Australian states post offices and postal services was taken over by the Commonwealth of Australia in March 1901. An early decision was made to print all postage stamps at the Government Printing Office in Melbourne. The plates were sent out from De La Rue but there was no suitable printing press available that could use them.

This resulted in the production of the two Lithographed plates for the 1d. They all have the V over Crown Victorian watermark and perforation 12½.

This print was first issued in January 1902 and was used until replaced by the Typographs in October 1902.

The Typograph printings.

The first issue of the Typographs was in October 1902 with the issue of plates 1 and 2. These were replaced after less than a year by plates 3 and 4 which saw service for 6½ years until replaced by plates 5 and 6 in March 1910. Plates 1 and 2 and early plate 3 and 4 printings

were produced on V over crown watermark paper. Later printings of plates 3 and 4 and all from plates 5 and 6 were on crown over A watermark. Inverted watermarks are common for all the Typograph printings and early printings plus a few later ones have the watermark sideways.

All Typograph printings have a range of perforations based primarily on 11 and 12½, some with combined perforations have higher value and are listed in the Stanley Gibbons catalogue.

Lithograph v Typograph difference:



Lithographed showing path in detail

Typographed showing path in detail

This is the easiest quick check to identify the type of printing.

Note: the path on London printings is similar to the Lithographed but the London printings were all done on TAS watermarked paper and the Lithographed on V over Crown.

NEW PLATINGS

The following positions have been added:

1-11, 1-20, 1-33, 1-53, 1-60, 2-5, 2-6, 2-7, 2-8, 2-32, 2-36, 2-53

1-47 has been deleted as no evidence of being a constant variety.

Flaw finder.

Top frame



2-1



2-2



2-2



2-3



2-6



2-7



2-8



2-9



1-10



2-25



2-25



2-56



1-5



1-7



2-20



2-26

Left frame



2-2



2-40



1-31



2-5



2-26



2-41



2-48



1-41



2-5



2-54

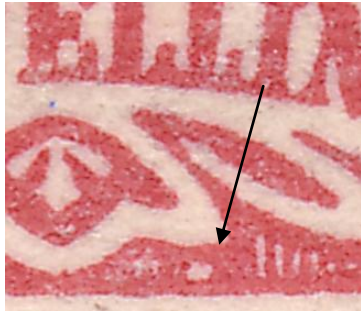


UCV v

Bottom frame



1-30



2-36



2-44



2-35



2-35

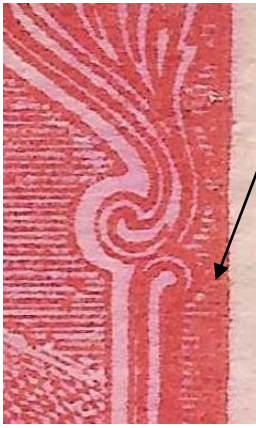


UCV v

Right frame



2-1



2-24



1-2



1-7



1-50



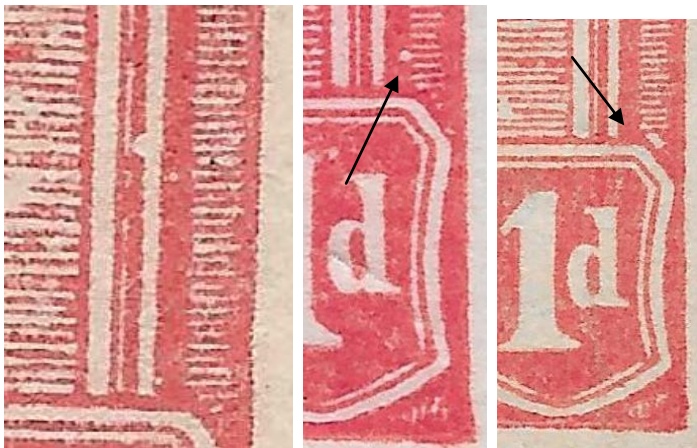
2-10



1-25

2-19

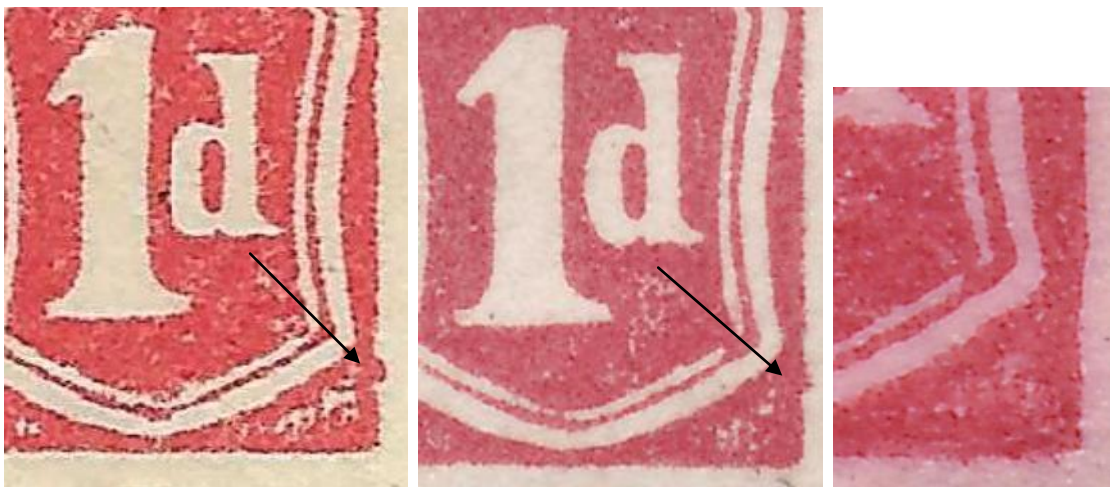
UCVii



2-10

2-60

UCV xi

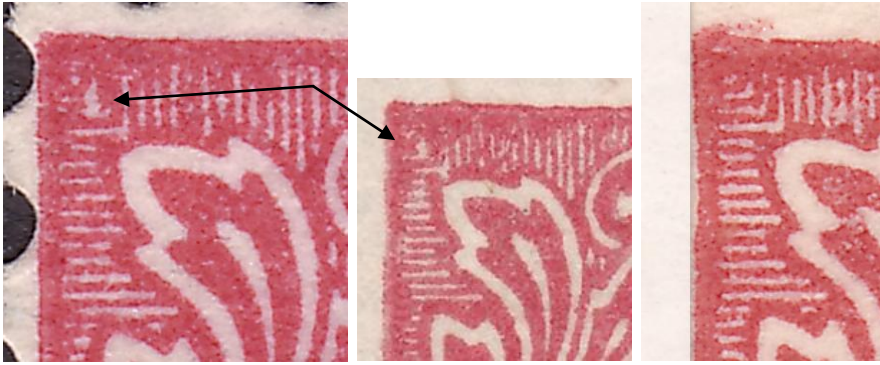


1-27

1-27

1-60

Top Left corner



1-11

1-11

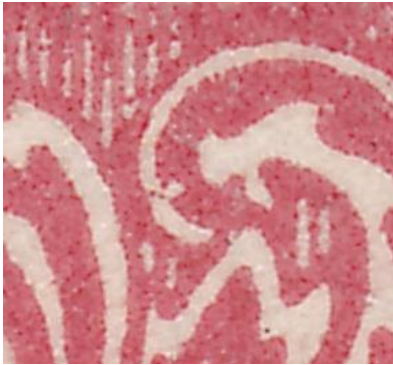
2-2

Top right corner

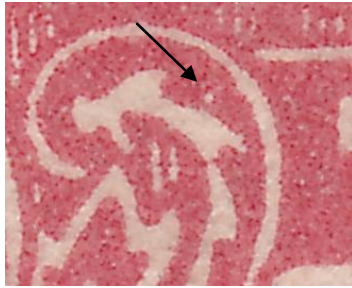


2-1

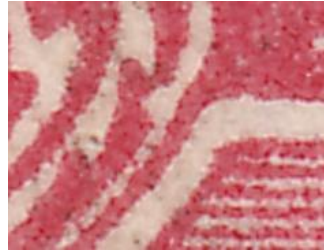
Left ferns



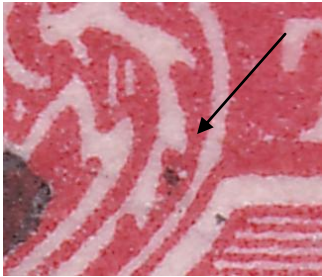
1-6



1-10



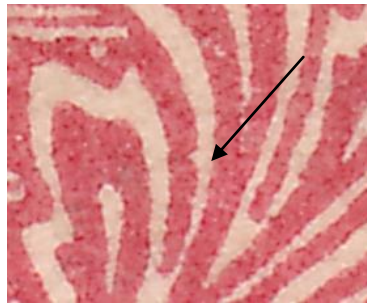
2-26



1-20



2-1



2-6



2-40

Tasmania band



1-4



1-9

1-19



2-9

2-26



1-1

1-3

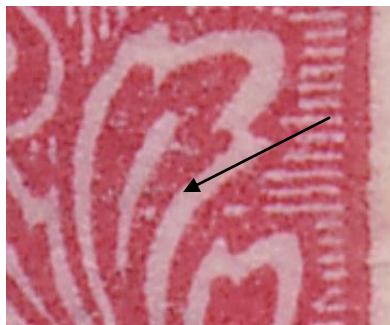
Right ferns



1-5



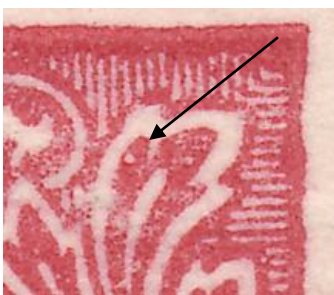
1-7



1-20

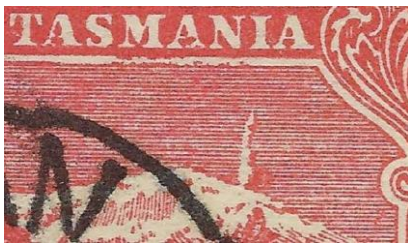


2-52



2-7

Sky



1-1



1-1



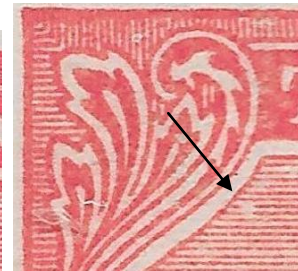
1-1



1-1



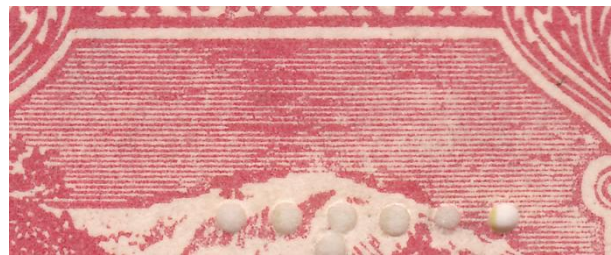
1-10



1-32



1-55



2-9 S2



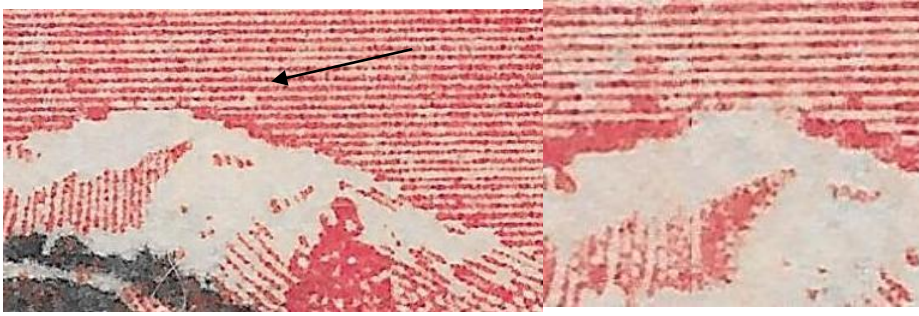
2-38



2-41

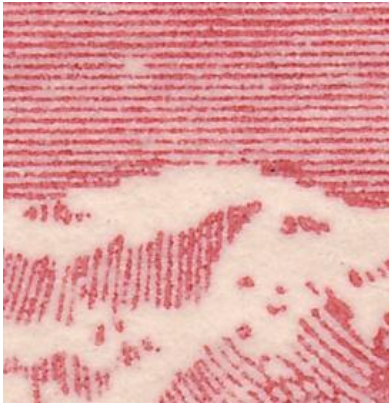


2-45

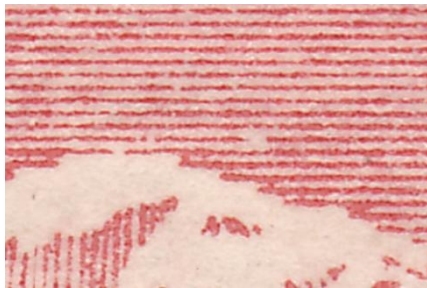


1-7

2-12



2-29



2-32



UCVii



1-4



1-5



1-6



1-31

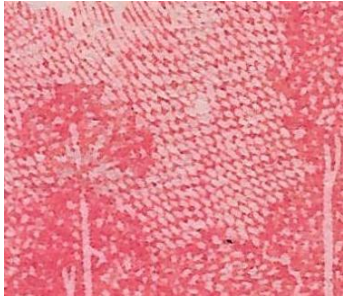


2-9



2-12

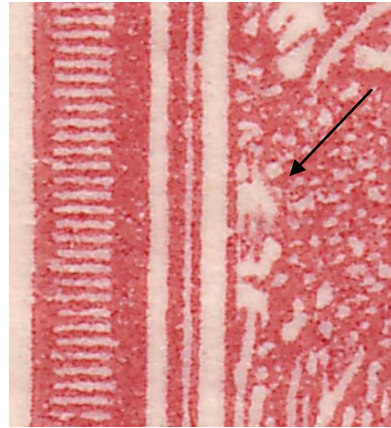
Trees



1-49



1-55



2-51



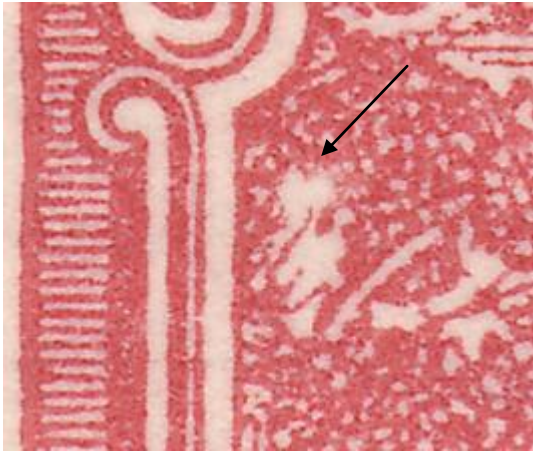
2-45



2-45



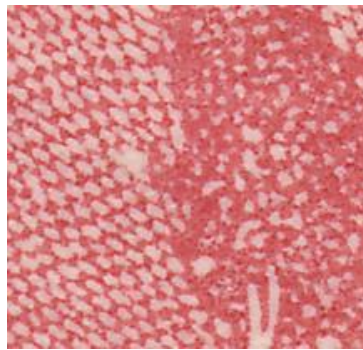
All 1-56



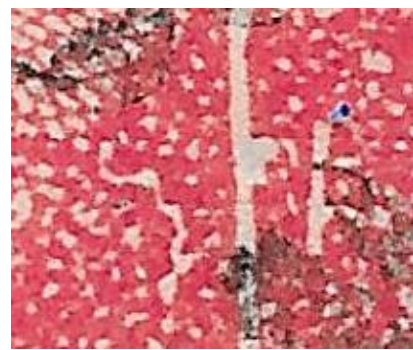
2-53



1-31



2-1



2-1



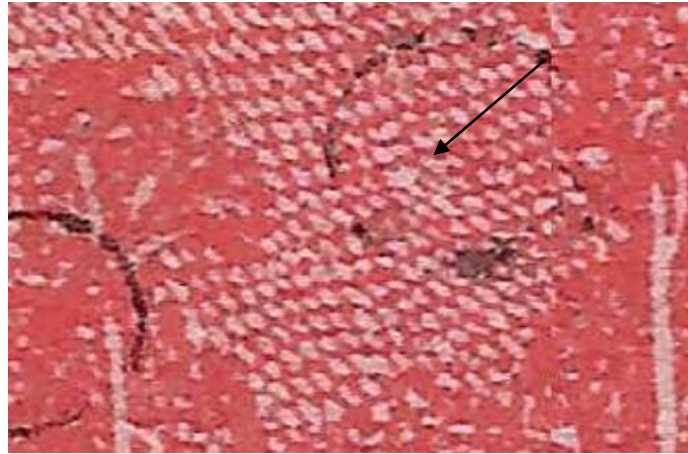
2-4



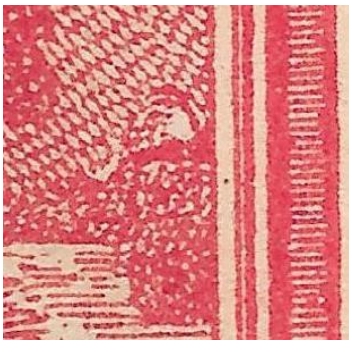
2-10



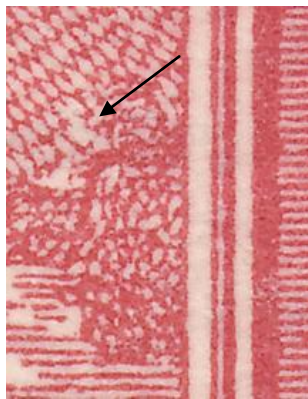
2-16



2-51



1-42

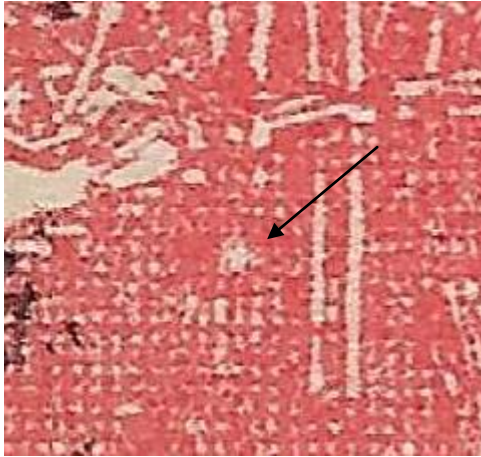


2-3

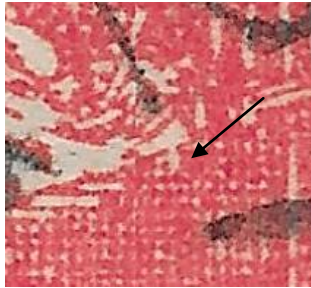


2-38

Water and banks



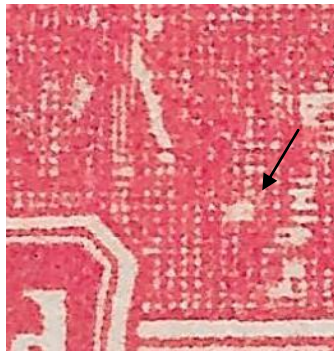
1-24



1-50



1-3



2-37



1-33

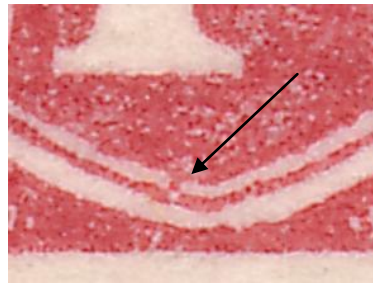
LVT



1-42



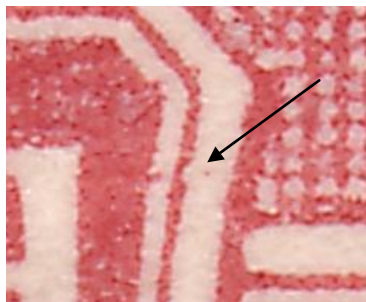
1-48



2-19



2-31



2-51



2-59

Mount Wellington band



1-50

2-1

2-4



2-44

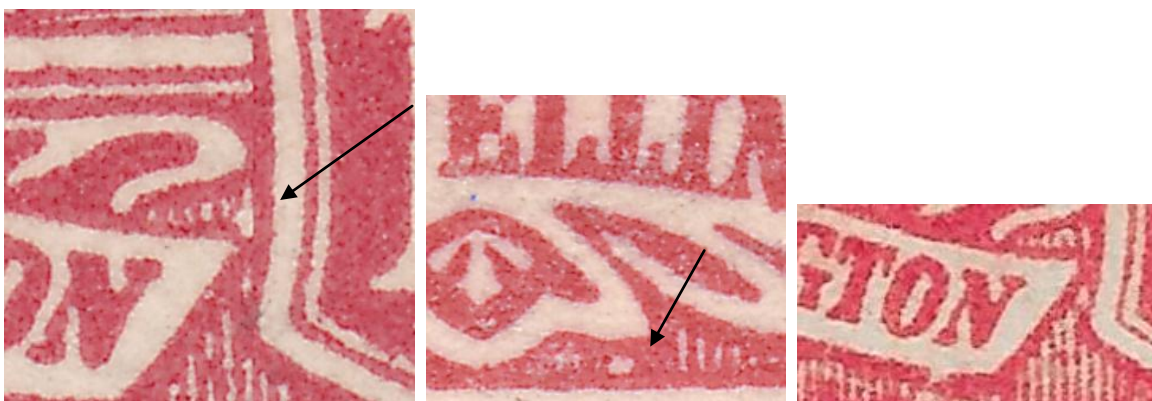
2-57



1-40

1-43

2-5



1-53

2-36

UCV x



2-59

RVT



1-26



2-58



1-36



1-36



2-59



2-35



2-35

Plated positions, plate 1

1 - 1



Original flaw



March 1903



July 1903



September 1903

Retouches



Tasmania band flaws

Quoted from K Lancaster book:

'The "volcano" variety. The original flaw looked like a tall flame erupting from the mountain top. It was a vertical white flaw 3 mm long, bordered on the right with colour, thick near the base, and appearing directly below 'NI'. It was repaired very early and is very rare in original state. The repair was well executed and appeared almost normal, although the pointed top of the tall tree below was blunted. The small colour flaw which penetrates the lower left of the right diagonal of the second 'A' of 'TASMANIA' is a constant distinguishing feature throughout the printing. The repair soon began to wear and a large triangular colour patch commenced building up on the upper right of the mountain to eventually reach alarming proportions with colour spots also appearing below 'MA', and was probably a contributing factor to the early replacement of Plate 1.'

1 - 2



- a) Tiny white barb on the left of 'I' of 'TASMANIA';
- b) white dot at left of right panel opposite mountain skyline.

1 - 3



- a) White dash over 'I' of 'TASMANIA';
- b) small nick in centre of right ferns;
- c) white flaw in water 6mm from left frame and 8mm from bottom frame.

1 - 4



- a) Spur on upper right of last 'A' of 'TASMANIA' with two dots above it and white flaw on colour above right;
- b) two dots in sky at right. One 7mm from top frame and 4mm from right frame and the other 8½mm from top frame and 4½mm from right frame;
- c) three small white spots top right of first 'A' of 'TASMANIA'

1 - 5



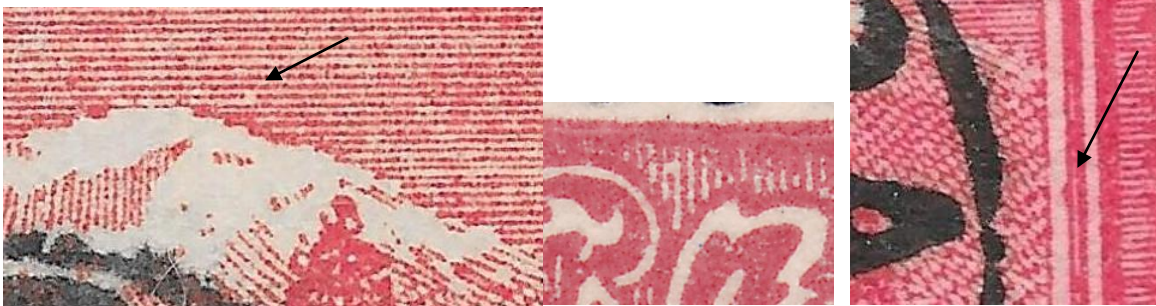
- a) White spot in shading above top right ornamental ferns 2 mm inside right frame;
- b) white spot in sky by right circular scroll.

1 - 6



- a) Tiny white dot in top right sky $2\frac{1}{2}$ mm below right diagonal of last 'A' or 'TASMANIA' located $5\frac{1}{2}$ mm from top frame and 6mm from right frame;
- b) slight bulge on centre of right upright of last 'A' of 'AUSTRALIA' ;
- c) small white spur in left ferns.

1 - 7



- a) Tiny white dot in sky just to right of and on level with the mountain top;
- b) white flaw above right ferns 2.5mm from top right corner;
- c) colour flaw in downwards scroll line 14mm from top frame (variable, not present on later copies).

Note: There are two very similar sky flaws, see plate 2 # 32.

1 - 9



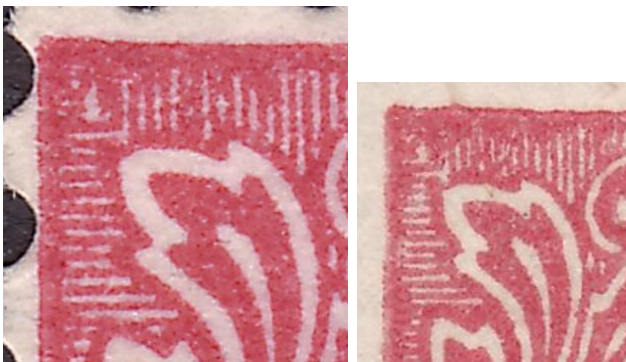
- a) Nick in solid colour below left upright of 'M' of 'TASMANIA';
- b) small crescent shaped mark at top of shading above 'N' of 'TASMANIA'.

1 - 10



- a) Nick in top frame above upper right of 'S' of 'TASMANIA' 10mm from top left corner;
- b) white dot in sky below first 'A' of 'TASMANIA' 4mm below top frame and 8½mm from left frame;
- c) small white spot in top right of left ferns.

1 - 11



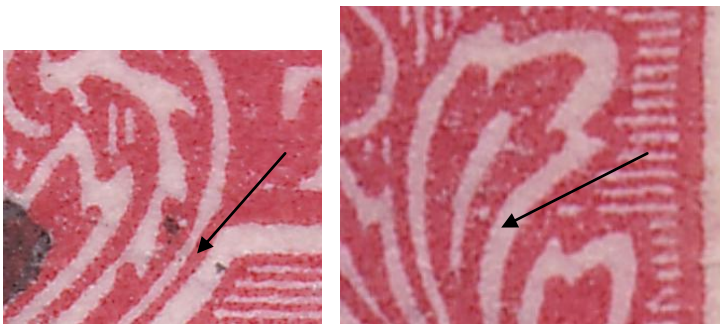
- a) White flaw in top left;
- b) left column watermark line required to confirm as similar flaws in other positions.

1 - 19



Small white flaw on upper right of base serif of 'T' of 'TASMANIA'

1 - 20

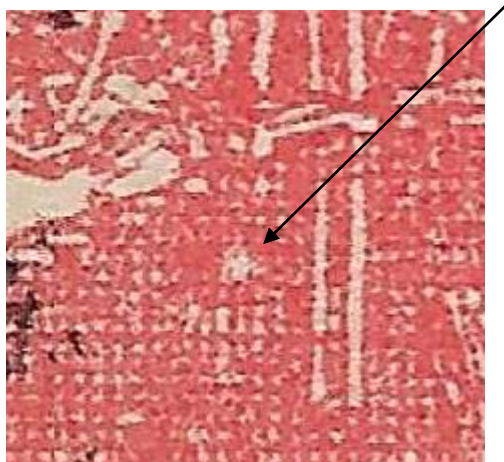


Minute white spot in right of left ferns;

spot in right ferns (variable).

Note: both these seen on other positions, but the two spots plus a right side watermark line as a combination are unique to this position.

1 - 24



White spot in water to left of the middle of the top tree reflections.

1 - 25



a) White spot on left side of right column 17 mm above base frame.

1 - 26



A circular white dot under right 'd'.

1 - 27



- a) Right frame protrudes outwards just above corner.

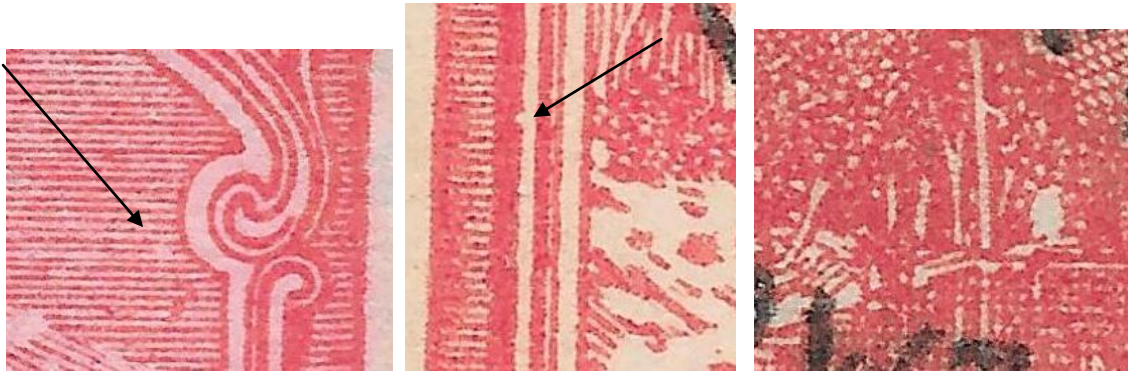
Note: there is a similar flaw from on plate 3-27.

1 - 30



- a) White spot in shading under lower left of RVT.

1 - 31



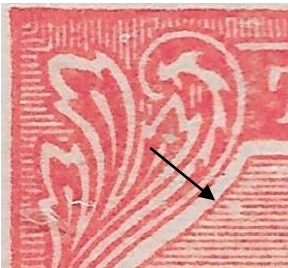
State 1:

- a) White spot in sky 8½ mm below top frame and close to right column;
- b) nick in colour on right of left frame shading 15mm from bottom frame.

State 2:

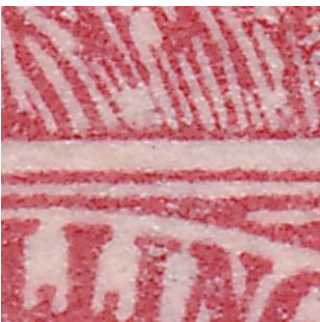
- a) White spot in sky 8½ mm below top frame and close to right column;
- b) nick in colour on right of left frame shading 15mm from bottom frame;
- c) late copies show a small white flaw at right of base of small central tree.

1 - 32



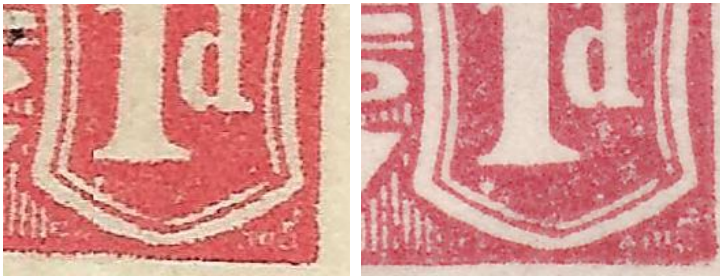
- a) White spot just inside top left section of sky and 4½ mm below top frame.

1 - 33



- a) White flaw in reeds above 'LI' of 'WELLINGTON' just above vignette frame.

1-36



- a) Small white flaw in base of RVT under left of 'l'. Slight increase in size in later print.

1 - 40



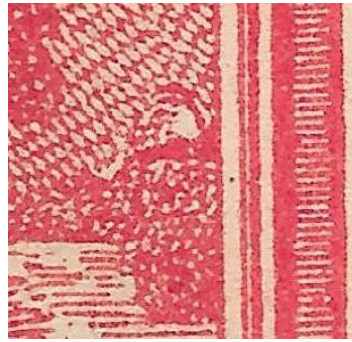
- a) A clear 'C' for 'G' in 'WELLINGTON' in 1902, but "Make ready" later eliminated 'C' appearance although 'G' still remained somewhat incomplete.

1 - 41



- a) Small white notch in colour line left of the left vignette frame line 12½mm above bottom frame.

1 - 42



State 1

- a) Coloured diagonal flaw in centre of left '1 (Previously noted as UCV viii);
- b) white flaw on top of small bush at extreme right of vignette,

State 2

Coloured diagonal flaw removed.

1 - 43



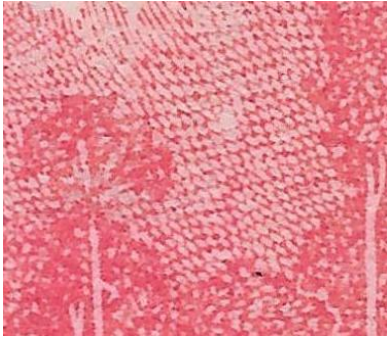
- a) White flaw in the middle of the two white loops above 'ON' of 'WELLINGTON'.

1-48



- a) White flaw in bottom just above centre of base frame in LVT

1 - 49



b) White spot in shading midway between top of central tree and taller tree at right.

1 - 50



- a) Small white flaw on upper right of 'N' of 'MOUNT';
- b) white spot in L of R column 11.5mm from top;
- c) flaw from left bank into water. (Earliest seen is July 1903)

1 - 53



- a) Small white flaw between top right corner of 'MOUNT WELLINGTON' banner and RVT.

1 - 55



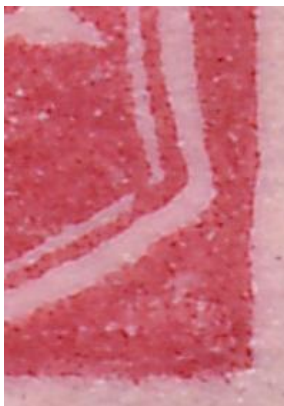
- a) White flaw in shading immediately above right half of central tree.
- b) White flaw in sky at right of tall left tree top.

1 - 56



The “broad tree” retouch. In the first stage (January O3) a white flaw developed inside the central tree at the top of the visible trunk. The retouch occurred just prior to the upright watermark printing and increased the size of the tree materially into a broad circular shape with a short trunk. (Scarce in either state.)

1 - 60



a) Bottom right frame shaved inwards. (variable)

Right column watermark line required for confirmation of this plating.

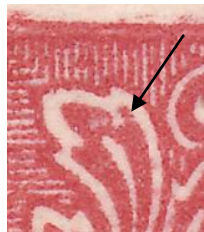
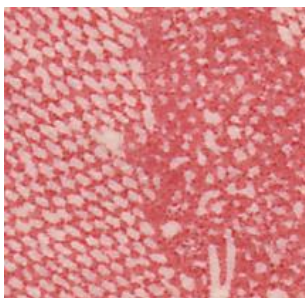
OTHER POSITIONS

At least one copy of all positions has been seen. There are a number of positions with one or two copies of a flaw identified but further confirmation is required to be able to confirm them as constant.

Plated positions, plate 2

The top row of plate 2 all may have a band of vague white spots through the top of both left and right ferns and the 'TASMANIA' band. This is very variable and only of use in positioning a stamp as top row, plate 2, other flaws are required to confirm position.

2 - 1



S1

- a) Small white flaw touching projecting branch on left of large tree at right;
- b) a band of vague white spots develop along the top of stamp (variable);
- c) top of right frame scooped inwards;
- d) small white flaw on left fern leaf.

S2

S1 flaws unchanged;

- e) a white flaw breaks top of 'M' of 'MOUNT' and colour above.

S3

S2 flaws unchanged;

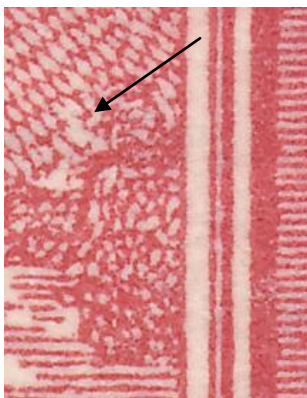
- f) white flaw on trunk of right tall tree.

2 - 2



- a) Horizontal band of faint white flaws extending across top of stamp through and above ferns and 'TASMANIA' (variable);
- b) top left frame scooped slightly inwards.

2 - 3



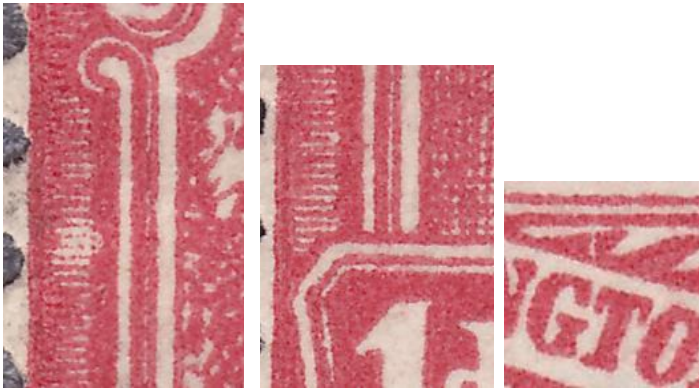
- a) Horizontal band of faint white flaws extending across top of stamp through and above ferns and 'TASMANIA' (variable);
- b) white flaw on left of small bush at extreme right.

2 - 4



- a) Horizontal band of faint white flaws extending across top of stamp through and above ferns and 'TASMANIA' (variable);
- b) small white spur at top right of 'MOUNT WELLINGTON' banner (variable);
- c) white "scratch" line, almost horizontal, passing from left column through left trees and upper section of central tree 14 mm below top frame (probably only in upright watermark prints).

2 - 5



S1

- a) Horizontal band of faint white flaws extending across top of stamp through and above ferns and 'TASMANIA' (variable);
- b) White flaw in left column, the 7 mm above base frame;
- c) Small vertical white line above 'GT' of 'WELLINGTON'.

S2

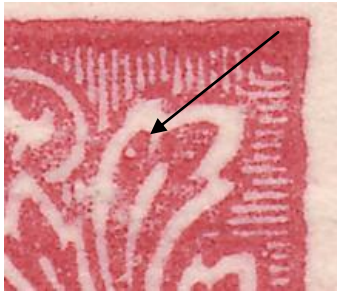
- a) Horizontal band of faint white flaws extending across top of stamp through and above ferns and 'TASMANIA' (variable);
- b) White flaw in left column not present;
- c) Small vertical white line above 'GT' of 'WELLINGTON'.

2-6



- a) Horizontal band of faint white flaws extending across top of stamp through and above ferns and 'TASMANIA' (variable);
- b) Small nick in left ferns.

2 - 7



- a) Horizontal band of faint white flaws extending across top of stamp through and above ferns and 'TASMANIA' (variable);
- b) white spot in right ferns.

2 - 8



- a) Horizontal band of faint white flaws extending across top of stamp through and above ferns and 'TASMANIA' (variable);

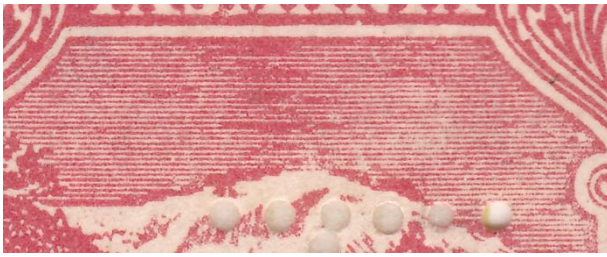
Do not plate as a single.

2 - 9



- a) Nick in solid colour under left upright of 'N' of 'TASMANIA';
- b) band of white flaws through ferns and 'TASMANIA' (variable);
- c) scoop in upper right frame opposite ferns, (variable);
- d) scoop in top frame to top right corner (variable);
- e) spot in lower right of sky just above half circle scroll;

State 2



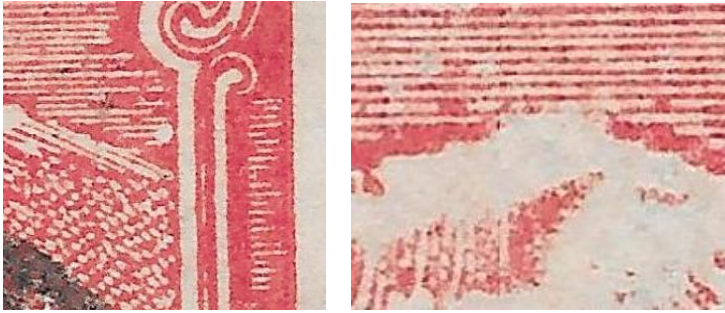
- a) Nick in solid colour under left upright of 'N' of 'TASMANIA';
- b) band of white flaws through ferns and 'TASMANIA' (variable);
- c) scoop in upper right frame opposite ferns, (variable);
- d) scoop in top frame to top right corner (variable);
- e) spot in lower right of sky just above half circle scroll;
- f) colour flaws in sky (variable, first seen with CDS August 1903).

2 - 10



- a) A break in the vertical colour line at left of right column and 9 mm above base;
- b) band of white flaws through ferns and 'TASMANIA' (variable);
- c) flaw at base of tree to right of large central tree;
- d) white spot in the frame shading column 12mm below the top frame;

2 - 12



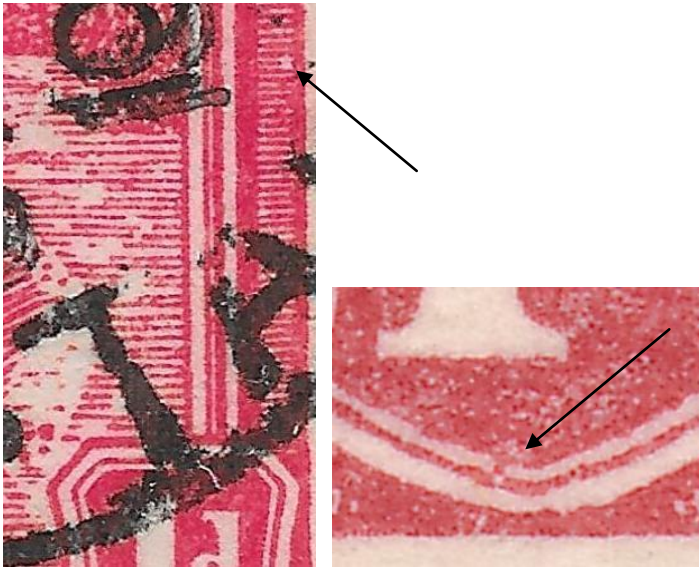
- a) Small white flaw in lower right of sky; and, later, break in colour line forming crest of mountain.

2 - 16



- b) White flaw in low bushes in left half to left of centre.

2 - 19



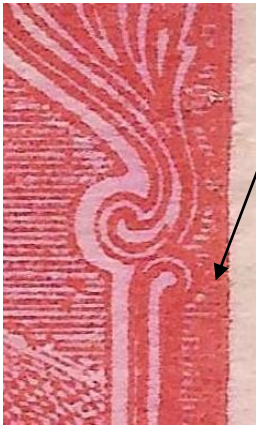
- a) Minute white spot in right of right column 12½ mm above base;
- b) small break and white spot in base frame of LVT.

2 - 20



- a) Nick in top frame 2½mm from right corner;

2 - 24



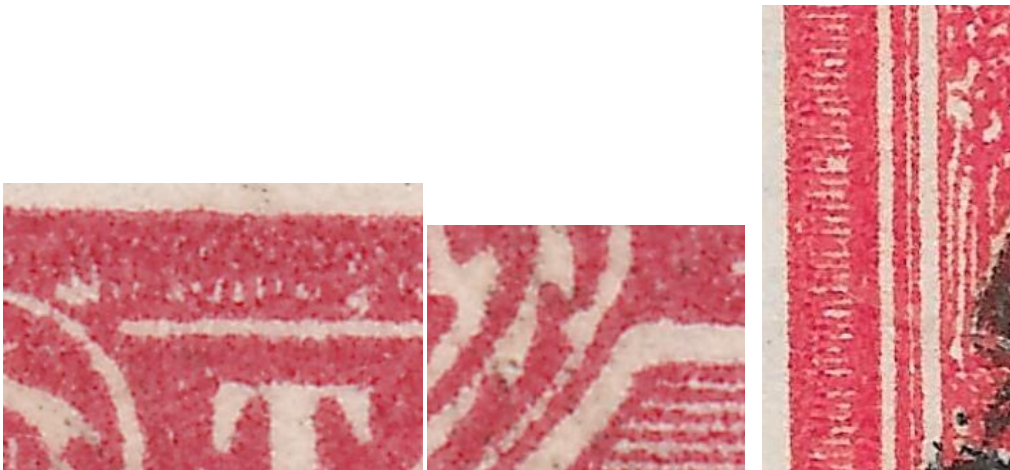
- a) Small white dot in right column 9 mm below top frame (late printings);

2 - 25



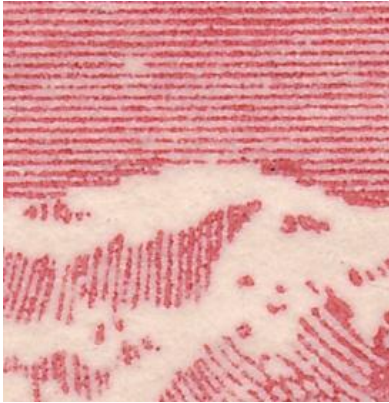
- a) The white crescent above 'M' is swollen by tiny white flaw.

2 - 26



- a) White spot at top right of 'T' of 'TASMANIA' and immediately above right of scroll ornament at left (late printings);
- b) thickening of right fern line by top left corner of vignette (variable);
- c) white spot in left column shading 15mm from top frame. (variable, late)

2 - 29



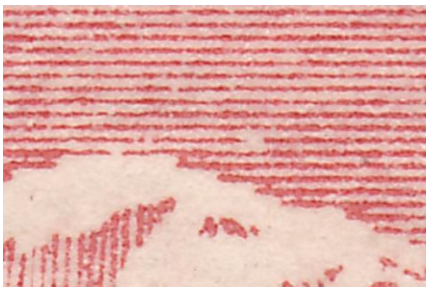
- a) White spot in sky 1½ mm above and to left of mountain crest.

2 - 31



- a) Two white flaws in LVT, one above right of 'l' and the other between 'l' and top of 'd'.

2 - 32



- a) Minute white dot in sky to immediate right of mountain crest.

2 - 35



- a) Small white flaw just outside lower left of RVT.

The position of these is the same, the circular flaw is from an October 1902 postmark and the smaller dash from an October 1903 one.

2 - 36



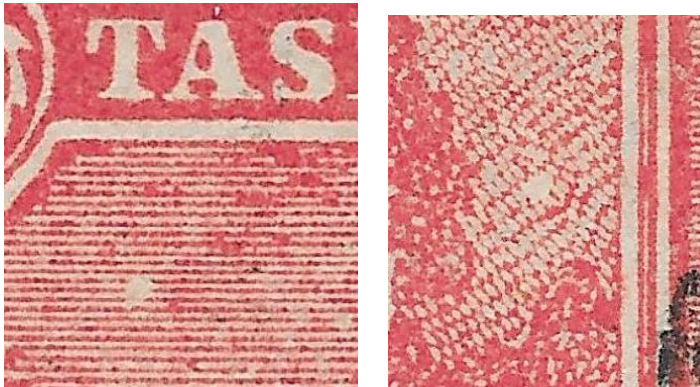
- a) White spot in base colour below right of central scroll.

2 - 37



- a) White flaw near base of water to lower right of the "fork" in reflections (late printings only).

2 - 38



- a) White spot in sky 3 mm below 'T';
- b) white spot in shading above low bush at extreme right.

2 - 40



- a) White flaws at left of top left fern. Late prints only)

2 - 41



- a) White spot in sky under 'T' and 6 mm below top frame (similar to No. 38 without second flaw);
- b) Notch in left column 15mm from base frame.

2 - 44



a) White spot below left end of title frame.

2 - 45



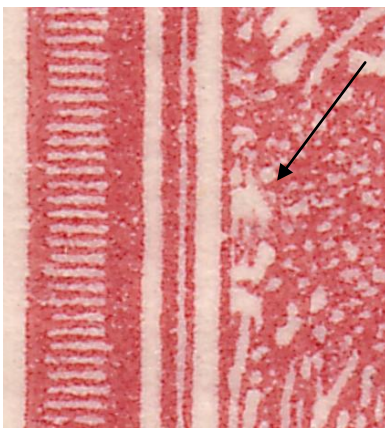
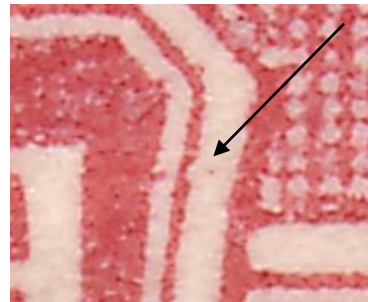
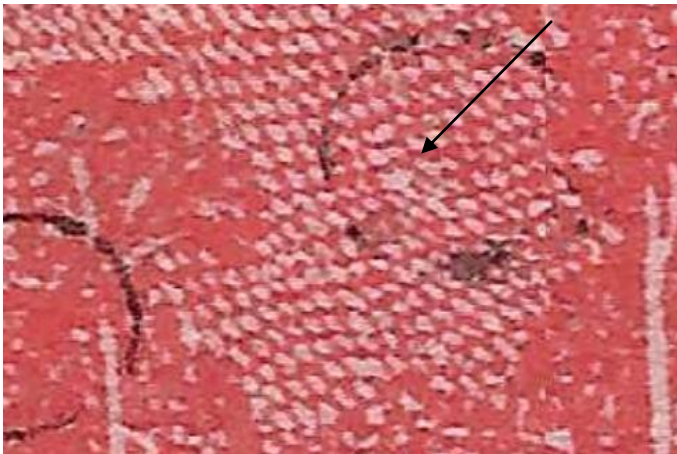
a) White flaw in upper left tree at skyline level, seen on late copies only. (variable)

2 - 48



- a) White flaw in left column 13 mm below top frame;
- b) in late printings a second white flaw appears just above the first.

2 - 51



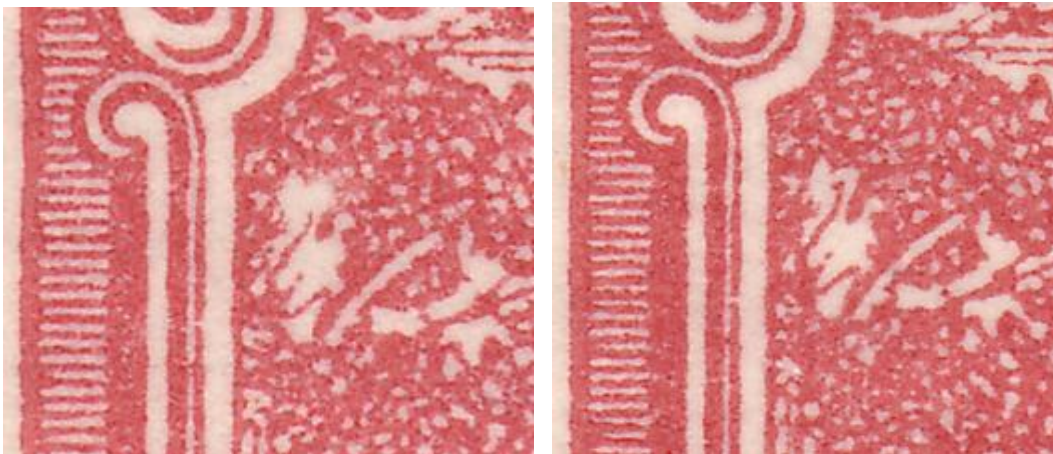
- a) Faint white flaw in shading between central tree and large tree at right;
- b) Small swelling on right frame of LVT;
- c) White flaw in trees on left by left frame.
- d) Left watermark line required to confirm.

2 - 52



a) White flaw in middle of top right scroll ornament;

2 - 53



a) White flaw in top left trees, normal copy alongside.

2 - 54



- a) A major repair showing a marked outward distortion of the left column from 4 mm to 12 mm above base frame.

2 - 56



- a) Thin white line breaking shading and frame above 'T' of 'TASMANIA'.

2 - 57



- a) Diagonal white flaw beneath scroll under 'NT' of 'MOUNT'

2 - 58



- a) Small white line breaking colour over scroll above 'N' of 'WELLINGTON';
- b) small bulge on right of '1' in RVT

2 - 59



S1

- a) The base serif of left 'l' extended markedly to left to join LVT frame.

S2

- a) The base serif of left 'l' extended markedly to left to join LVT frame.
- b) RVT: Minute white spot to left of bottom seriph of '1'.

Earliest seen January 1903.

2 - 60



- a) Tiny white dot in left of right column $6\frac{1}{2}$ mm above base frame.

UCV's Plates 1 & 2

These UCV descriptions are from the book by K Lancaster.

UCV ii:



- a) Two white spots in sky, one under first 'A' and other under left upright of 'M';
- b) white spot in right column 15 mm below top frame.

UCV v:



- a) Lower left corner pointed and extended. (As per K Lancaster)

All copy dates suggest late usage, all are in date range for plates 3/4.

Pin hole on one copy suggests a bottom row position.

UCV x:



- a) white flaw breaking colour line under 'N' of 'WELLINGTON', right side position.

UCV xi



- a) White spot to right of right column 5½ mm above base (late printings).